


### The National Environmental Policy Act

Maine Division Office



Cassie Chase  
Federal Highway Administration

U.S. Department of Transportation  
Federal Highway Administration

---

---

---

---

---

---

---

---

### What is NEPA?

Maine Division Office

- Procedural law
- Requires Federal agencies to consider environmental effects of their actions

U.S. Department of Transportation  
Federal Highway Administration

---

---

---

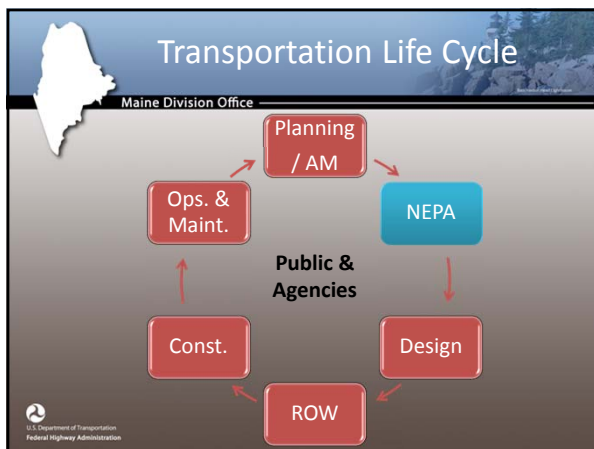
---

---

---

---

---



---

---

---

---

---

---




---

---

## NEPA Umbrella

Maine Division Office

- Title VI of Civil Rights Act of 1964
- Americans with Disabilities Act
- Executive Order 12898 (Environmental Justice)
- Section 4(f) of USDOT Act
- Section 106 of National Historic Preservation Act
- Farmland Protection Policy Act
- Executive Order 11990 (Protection of Wetlands)
- Wetlands (23 CFR 777)
- Executive Order 11988 (Floodplain Management)
- Coastal Zone Management Act
- Fish and Wildlife Coordination Act
- Section 7 of the Endangered Species Act
- Clean Air Act
- Section 6(f) of the Land and Water Conservation Fund Act
- Noise (23 CFR 772)
- Highway Noise Standards
- Marine Mammal Protection Act
- Magnuson-Stevens Fishery Conservation and Management Act
- Migratory Bird Treaty Act
- Economic, Social and Environmental Effects
- AND much MORE...



---

---

---

---

---

---



---

---

## Essential Elements of the NEPA Process

Maine Division Office

- Purpose and Need
- Alternatives
- Effects Analysis
- Mitigation
- Public involvement
- Interagency coordination
- Documentation



---

---

---

---

---

---



---

---

## Purpose and Need

Maine Division Office

- Provides the critical foundation for successful decisionmaking
- Provides the basis for a reasonable range of alternatives, evaluations and comparisons



---

---

---

---

---

---

---

---

## Alternatives

Maine Division Office

- As part of the NEPA process, we must develop and analyze:
  - A reasonable range of alternatives
  - Avoidance/minimization alternatives
  - No Build/No Action alternative

U.S. Department of Transportation  
Federal Highway Administration

---

---

---

---

---

---

---

---

## Effects Analysis

Maine Division Office

- For each alternative identified, we must analyze all the environmental\* effects\*\*

\*natural, social, economic, human environment  
\*\*direct, indirect, cumulative effects

What are the important resources?      Where/how will the action impact the resources? [Cause]      What will happen because of the action? [Effect]

U.S. Department of Transportation  
Federal Highway Administration

---

---

---

---

---

---

---

---

## Mitigation

Maine Division Office

- Mitigate for adverse effects
- Types of mitigation include:
  - Avoidance
  - Minimization
  - Repair, rehabilitation, restoration
  - Preservation
  - Compensation

U.S. Department of Transportation  
Federal Highway Administration

---

---

---

---

---

---

---

---

Public Involvement & Interagency Coordination

Maine Division Office



U.S. Department of Transportation  
Federal Highway Administration

---

---

---

---

---

---

---

---

Documentation

Maine Division Office

- Informs decision-makers
- Evidence of alternatives and impacts analysis
- Proof of compliance
- Informs the Administrative Record

U.S. Department of Transportation  
Federal Highway Administration

---

---

---

---

---

---

---

---

Conclusion

Maine Division Office

The goal of the NEPA process is to make better decisions to solve transportation problems.

U.S. Department of Transportation  
Federal Highway Administration

---

---

---

---

---

---

---

---

Questions?

Maine Division Office



U.S. Department of Transportation  
Federal Highway Administration

---

---

---

---

---

---

---

---